



Kyle Holmes, Director

Celebration of Performing Arts Showcase
San Bernardino County



Role of COEs in Prop 28 Implementation

- Serve as intermediaries between state policy and local implementation
- COEs support all 58 counties statewide
- Build capacity and coordinate regional leadership
- Support district and county-operated arts education programs



What's Working

Access is expanding: especially in elementary grades and districts that previously had little or no arts programming

Workforce investment is leading implementation: LEAs are prioritizing certificated and classified staff to deliver standards-based arts instruction

Strategic arts planning is taking hold: counties and districts are developing formal arts plans to guide responsible, long-term use of Prop 28 funds

COEs and statewide partners are providing leadership: Supporting planning, coordination, and implementation in the absence of early state guidance



Wendy M.
Los Angeles County

Expanded Access

San Bernardino County

One large district hired **25** elementary arts teachers, expanding access to all four arts disciplines for **22,000 students**

The same district added **11** secondary arts teachers, increasing access for **4,400** middle and high school students

70 instructional coaches hired to support arts instruction and classroom integration

In another district serving **33,000** students, **36** arts teachers were hired - bringing visual arts, music, theatre, and dance to elementary students for the **first time**



Giselle L.
San Bernardino County

Investment in Qualified Educators

San Joaquin County

70+ new arts FTEs across large unified districts

Stanislaus County

128+ new arts staffing positions

Specific emphasis on creating **equitable access** for traditionally underserved populations - preschool, students with disabilities, adult learners, at-risk youth



Jalyssa M.
San Joaquin County

Strategic Planning

Humboldt County

Largest district was inspired to write a strategic arts plan. For the first time ever, the district is able to implement sequential, standards based instruction from TK - 12

San Diego County

SDCOE supported four districts in developing and implementing their first strategic arts education plans, joining seven existing plans and guiding Prop 28 investments to expand arts access for more than **240,000** students countywide

Five districts created dedicated positions to lead arts education implementation districtwide



Marley R.
San Diego County



Kimberly R
Imperial County

Challenges

Workforce Capacity & Staffing Requirements

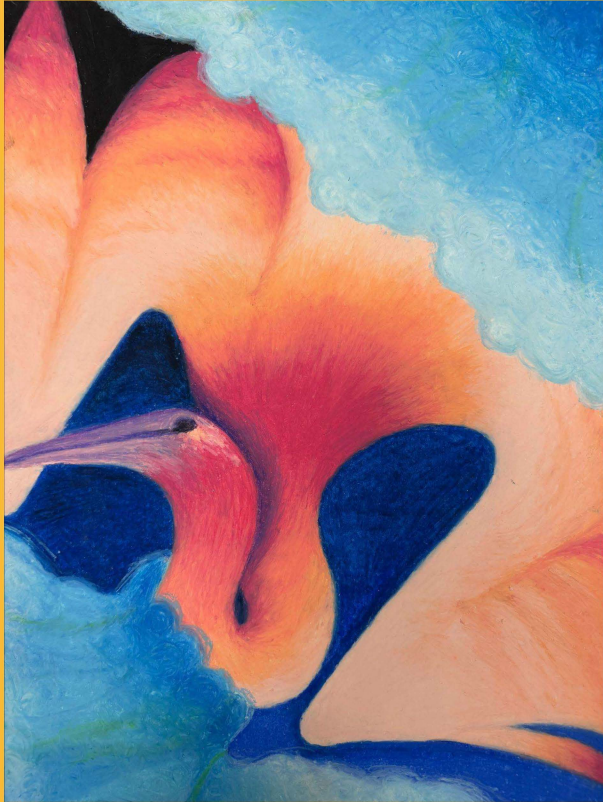
- Theatre and dance credentials are still emerging
- 80/20 staffing requirements remain difficult to meet
- Rural, small, and elementary LEAs are most impacted

Statutory Ambiguity

- Uncertainty around supplement vs. supplant
- Limited clarity on treatment of pre-existing funds
- Limited clarity has led to risk aversion

Unintended Implementation Behavior

- Some LEAs are delaying or pausing spending entirely
- Decisions driven by fear of noncompliance rather than lack of commitment



Flamingo
Charlie T., Lassen County

Equitable Opportunities

Multiple elementary districts serving 50–60 students receive between **\$7,000 and \$10,000** annually in Prop 28 funding

At this funding level, LEAs report difficulty supporting even fractional certificated staffing, let alone sequential, standards-based programs

These LEAs are making responsible planning decisions, but the funding does not stretch far enough to build sustainable arts education systems without additional structural support



Monica P
Merced County

Statewide Implementation Support

Title I: ~\$2B annually, supported by a robust CDE technical assistance and monitoring infrastructure of dozens

Prop 28: ~\$1B annually, with statewide technical assistance currently assigned to **one Education Program Consultant**

The scale of the investment and the scale of formal support remain **misaligned**

Thank You.

